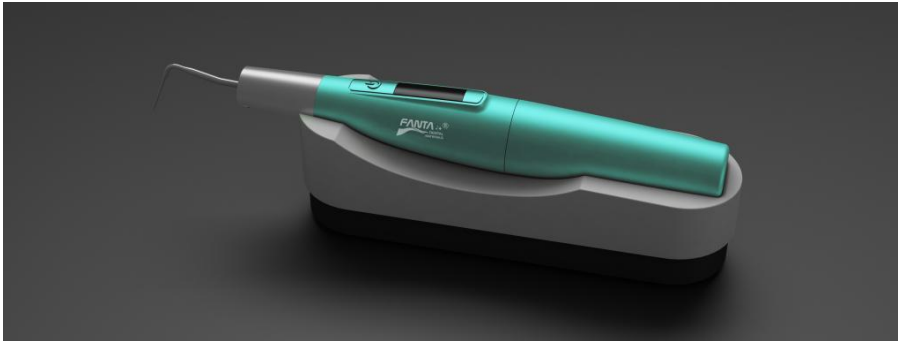
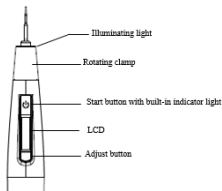


Obturation system down pack



Product advantages

- 1、Temperature Range: 110°C, 140 °C, 170 °C, 200 °C, 230 °C
- 2、2S to 200°C: temperature rises instantaneously in 2 seconds
- 3、Front Light : Led light gives a better view inside oral cavity
- 4、Bluetooth: Wireless foot control
- 5、Battery 2600 MAH: Longer standby time
- 6、Internally Heated Tip: the working end (3-4mm) of the tip is heated
- 7、Rotation tip: the needle can be rotated to adapt to multi-angle operation.



Operating

Start button:

Turn on: Press start button for 1s, the device trun on

Operate: Pess the start button to heat, and release the start button to stop heating; Press and hold to the start button will heat for 5s, then it will automatically stop heating and enter the cooling state. Only the working end (3-4mm) of the tip is heated.

Turn off: No working and after 1 minute automatic trun off.

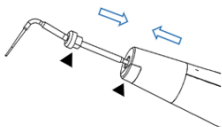
Adjust button:

Adjust the temperature: press the adjust button to adjust the temperature, including 110°C,140°C,170°C, 200°C and 230°C;

Turn on and off the bluetooth: press and hold the adjust button for more than 1s to turn on the bluetooth; press and hold the adjust button for more than 1s to turn off the bluetooth.

Installation of Heating Needle

Align the heating needle holder to the slot of the main frame, where the heating needle notch is aligned with the position of the illuminating light of the main frame (triangulated position as shown below), and push it to the appropriate position.



The angle of the heating needle is adjustable: rotate the position of the silver clamp of the main frame to adjust its angle, and the rotation can be about 270°.

Warning:

Turn off the device when installing the heating needel.

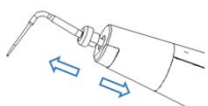
Ensure heating needel is securely installed, without loosening or falling off;

Please use the original heating needel;

Working tip is not sterilized please use it after sterilization;

Removal of Heating Needle

When the heating needle cools, pull it out in the opposite direction, as shown in the figure below.



Warning:

When installing or removing the tip, be careful not to injure your fingers;

When installing or removing the tip, make sure that the main unit turned off.

To remove the heating needle, please wait for it to cool for about 8s;